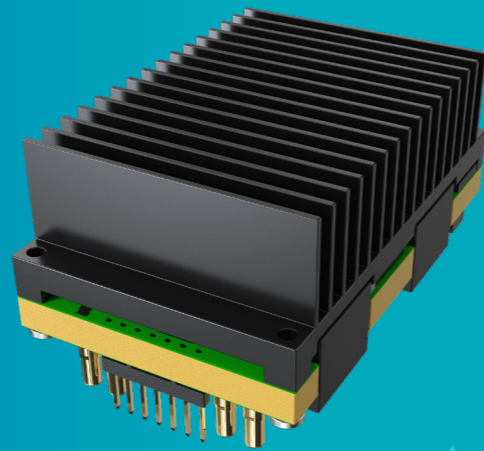
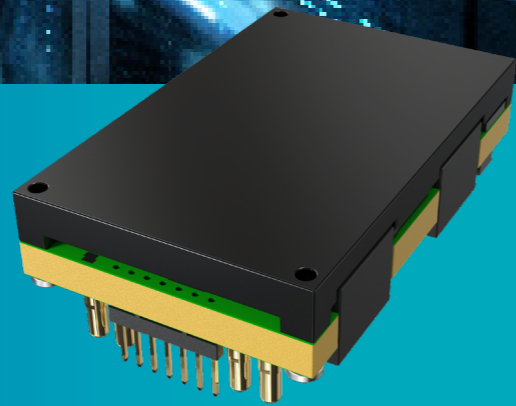


Specification 2KW Brick Heatsink

Form Factor and Dimensions (W x D x H)	36 x 58 x 15 / 36 x 58 x 27 mm
Power	2000W
Input Voltage	40V-60V
Output Voltage	12.2V
Working Temperature	-40 ~ 85C
Efficiency	97.7% @50% load
Current Sharing Method	Droop + active current share
Communications	PMBus Compliant for 100KHZ and 400KHZ



Quarter Brick 2000W



Key Features

- High efficiency 97.5%+
- Active current share + Droop
- Heatsink and Baseplate options
- Fault recording functionality
- PMBus communication 100K/400K

Applications



HPC



AI



Server

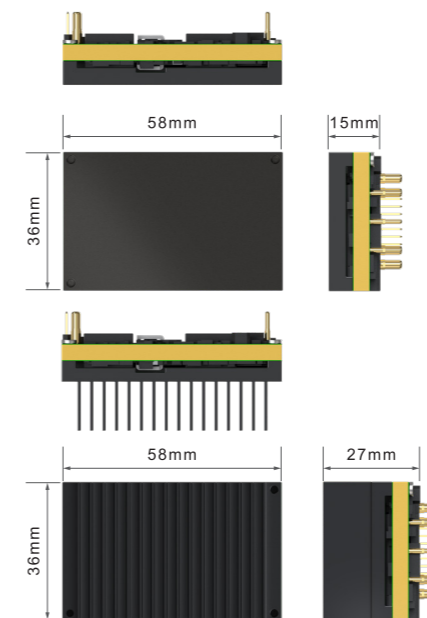


Networking



Storage

Dimension Details



For more product information and sales inquiries :

- www.liteon.com
- +886-2-8798-2888
- CIPS-Sales@liteon.com
- 13F, No. 555, Siyuan Rd., Xinzhuang Dist., New Taipei City 242034, Taiwan, R.O.C.



Visit us

Specifications are subject to change without notice.